

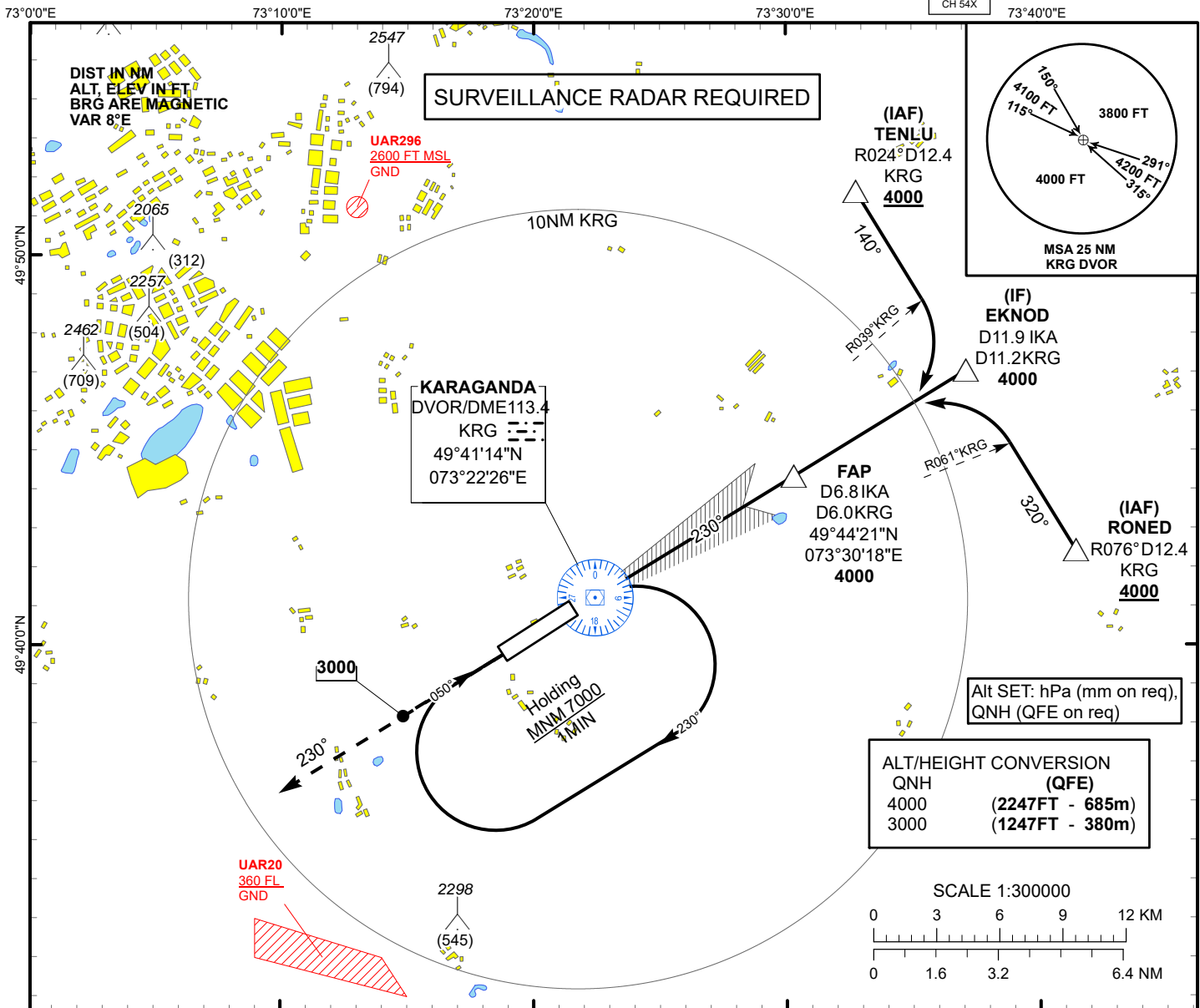
**INSTRUMENT APPROACH  
CHART  
ICAO**

AERODROME ELEV **1766 FT**  
HEIGHTS RELATED TO  
THR RWY 23 - ELEV **1753 FT**

**KARAGANDA TOWER 122.0**  
**KARAGANDA ATIS (EN) 135.8**  
**KARAGANDA ATIS (RU) 127.8**

ILS  
LLZ 111.7  
IKA  
GP 333.5  
CH 54X

**KARAGANDA  
ILS/DME  
RWY 23**



**MISSED APPROACH**

Climb on track 230° to 4000FT,  
After passing 3000FT radar  
vectoring will be provided.  
**RADIO FAILURE:**  
In case of RCF climb on track 230° to  
3100FT or above. Outbound to D6.7 NM  
KRG, turn LEFT to KRG. Climb to  
7000FT to KRG and join to holding  
pattern.

**TRANSITION ALT**  
10000

**FAP**  
D6.8 IKA  
D6.0 KRG  
4000

**IF EKNOD**  
D11.9 IKA  
D11.2 KRG  
4000

**ILS RDH 53**

**THR RWY 23**  
ELEV 1753

**DVOR/DME**  
KRG

**GP 3.0°**  
230°

230°

0 1 2 3 4 5 6 7 8 9 10 11 12

CHANGE: Missed approach description

Aircraft Category		A	B	C	D	DIST to THR DME IKA	NM	6.8	5	4	3	2	1		
Straight-in Approach OCA/H	ILS CAT I	1954(200)	1954(200)	1954(200)	1955(201)	DME KRG	NM	6.0	4.2	3.2	2.2	1.2	0.2		
						ALTITUDE	FT	4000	3420	3093	2769	2446	2125		
						HEIGHT	FT	(2246)	(1667)	(1340)	(1016)	(693)	(372)		
DME IKA ZERO RANGED TO THR RWY 23															
Aerodrome Operating Minima DH ft x RVR(CMV)	ILS CAT I					GS	Kt	80	100	120	140	160	180		
								Desc.Rate( 5.2%)	ft/min	420	530	630	740	840	950

KARAGANDA  
ILS/DME

AERONAUTICAL DATA TABULATION

ILS approach to RWY23 from TENLU, EKNOD, RONE	
Fix/point	Coordinates
(FAP) D6.8 IKA, D6.0 KRG	49°44'21.0"N 073°30'17.6"E
EKNOD (IF) D11.9 IKA, D11.2 KRG	49°47'02.9"N 073°37'07.1"E
TENLU (IAF) R024°, D12.4 KRG	49°51'39.2"N 073°32'46.3"E
RONE (IAF) R076°, D12.4 KRG	49°42'26.4"N 073°41'27.1"E
THR RWY23	49°40'49.44"N 073°21'24.50"E
LOC IKA	49°39'37.0"N 073°18'23.0"E
KRG DVOR/DME	49°41'13.9"N 073°22'25.7"E